

WHAT WE OFFER

We aim to offer our employees a working environment that is as compatible as possible with their individual needs. Because we know that our colleagues are more than just employees. They are family people, parents, sports enthusiasts, club members, film enthusiasts, music fans, nature lovers and doubtlessly much more. With our wide range of benefits and additional services, we've got your back.

INNOVATION

- ▶ Working on and with cutting-edge technologies
- ▶ Award-winning innovation management
- ▶ Real creative freedom
- ▶ Collaboration with experts

DEVELOPMENT OPPORTUNITIES

- ▶ Expert, project management or management careers
- ▶ Wide range of further training programs
- ▶ Internal development conferences and working groups

WORK-LIFE-BALANCE

- ▶ Flexible working hours
- ▶ Home-Office possibility
- ▶ 30 vacation days
- ▶ Special leave
- ▶ Company pension

WORKPLACE & RECOGNITION

- ▶ Stable & attractive work environment
- ▶ 90-year-old family business
- ▶ Attractive compensation
- ▶ Vacation – and Christmas bonus
- ▶ Extensive special provisions under collective pay-scale agreements (vacation/monetary benefits)

BECOME PART OF THE TEAM!

Apply now in the fields of software and hardware development, systems engineering, and many more areas such as research, development, production, IT, finance, marketing, and HR!



JOIN US!

#MAKEIDEASREAL

www.rohde-schwarz.com/career



#make ideas real

WORK AT ROHDE & SCHWARZ

Plan your next career step at Rohde & Schwarz and contribute to a safer and connected world.

INNOVATION | FUTURE | TECHNOLOGY | CAREER

ROHDE & SCHWARZ

Make ideas real



OUR MISSION AT ROHDE & SCHWARZ

At Rohde & Schwarz, we have been working along the entire value chain for more than 90 years: We develop, produce, and market ideas, systems, and products for a secure and connected world.

As a German family-owned company, we focus on independence, flexibility, and technological relevance to provide our customers with the best solutions. Our employees are the key to our success! Therefore, we place great importance on ensuring an innovative and stable working environment for everyone.



> 90 years

of company history



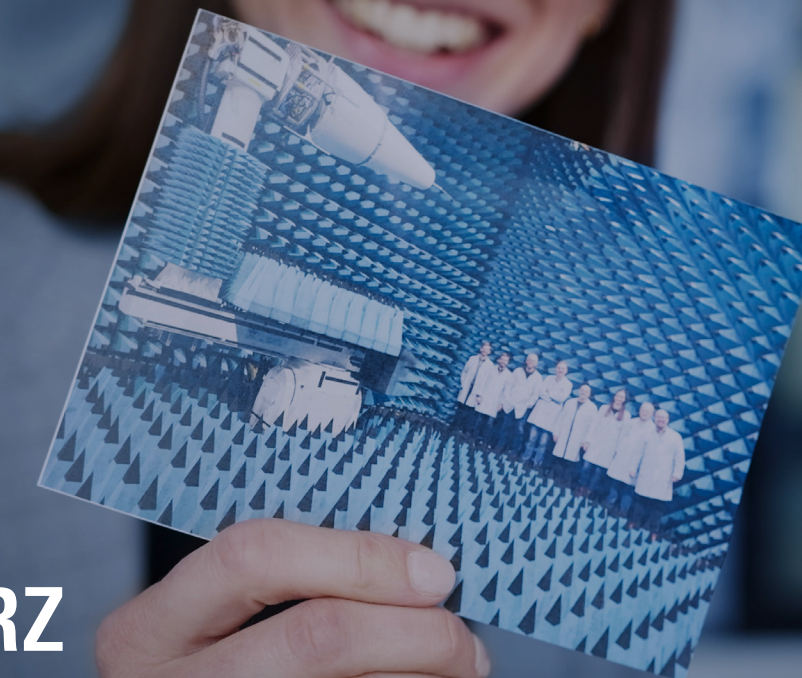
11,1 years

average years of employment



> 14.400

employees in over 70 countries



CLOSE TO THE MARKET. CLOSE TO THE CUSTOMERS.

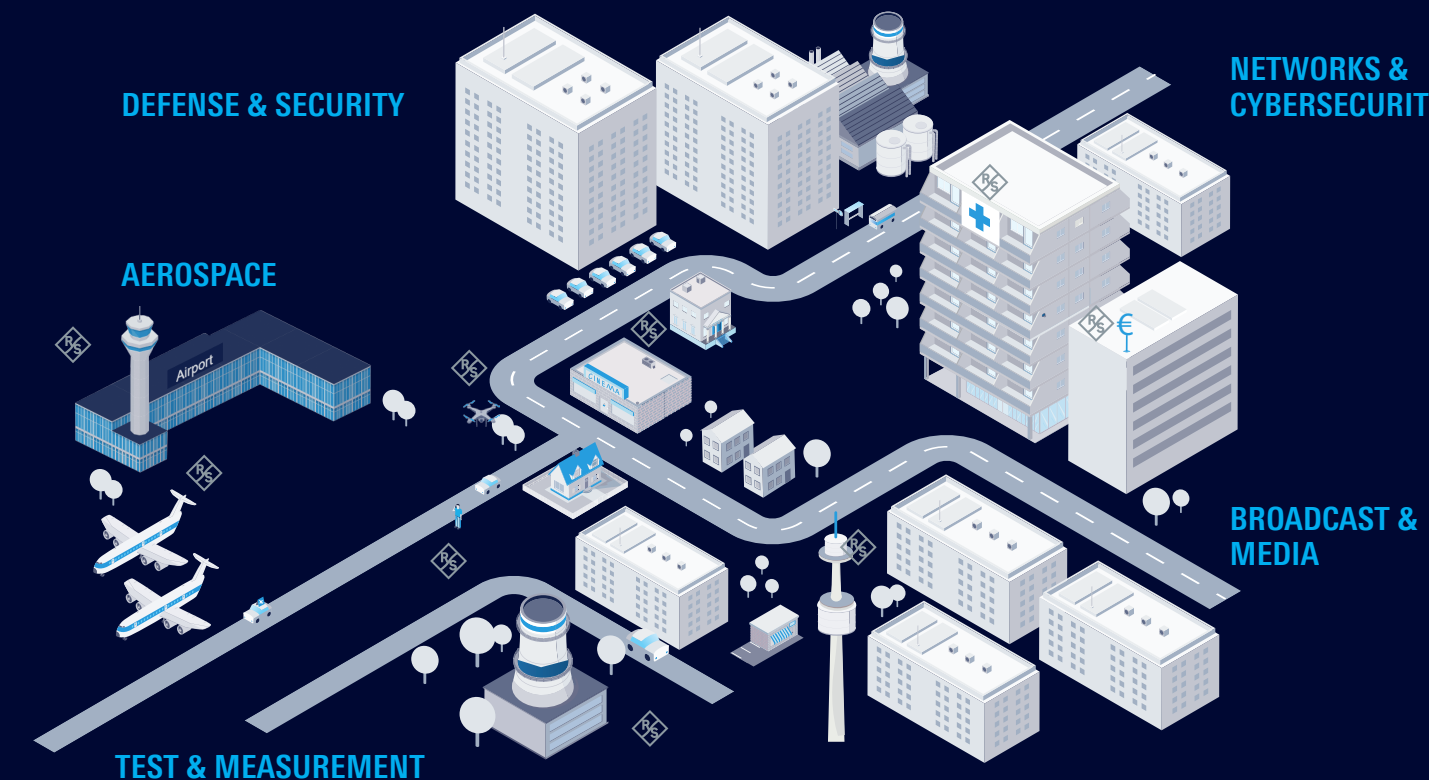
Locations in
OVER 70 COUNTRIES

Over
60 SUBSIDIARIES

Five production
sites
WORLDWIDE



OUR SOLUTIONS FOR A SAFER AND CONNECTED WORLD!



ONE COMPANY, THREE BUSINESS UNITS, DIVERSE MARKETS.

TEST & MEASUREMENT

- ▶ Wireless
- ▶ Industry, Components, and Research
- ▶ Aerospace & Defense Testing
- ▶ Automotive

TECHNOLOGY SYSTEMS

- ▶ Secure Communications
- ▶ SIGINT / Electronic Warfare
- ▶ Monitoring & Analytics
- ▶ Infrastructure & Networks
- ▶ IP Network Analytics

NETWORKS & CYBERSECURITY

- ▶ Endpoint & Mobile Security
- ▶ Secure Networks
- ▶ Certified & High-Grade Crypto Solutions



ENTER AT ANY LEVEL & DEVELOP YOURSELF!

Our numerous development and training opportunities support you along the way.



Expert, project
management or
management careers



330 eTraining
offerings



More than 2,000
training formats



Coaching and
mentoring programs